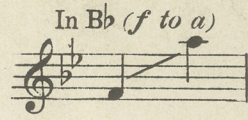
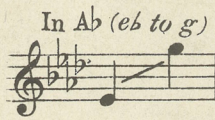
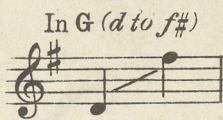
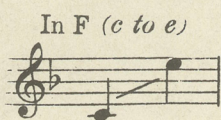
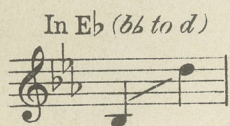
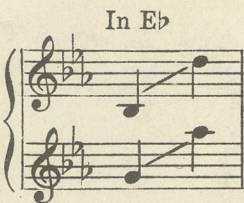


W. C. PUTNAM

Sung by
Mr. CHARLES HARRISON



Alto (*b \flat to d*)
or Baritone (*Lead*)
and
Soprano (*g to a \flat*)
or Tenor



Duets



Soprano (*f to a \flat*)
or Tenor (*Lead*)
and
Alto (*a# to d \flat*)
or Baritone

THE MAGIC OF YOUR EYES



Lyric and Music

BY

ARTHUR A. PENN

Composer of "CARISSIMA," "YOKOHAMA MAID," (Operetta)
"THE SALT OF THE SEA FOR ME" etc.

Price 60cents.



M. WITMARK & SONS,

NEW YORK • CHICAGO • PHILADELPHIA
SAN FRANCISCO • BOSTON
LONDON.

Two Charming Encore Songs by Arthur A. Penn

WITHIN THE LEAVES

Solo, in F, (c to f,) 60 cents net

Andante affetuoso

That sim - ple lit - tle flow'r That once you gave to me, It
lived for but an hour, Then fa - ded, as you see! With - in these yel - lowed leaves It

The musical score for 'Within the Leaves' is written in F major, 4/4 time, and marked 'Andante affetuoso'. It features a vocal line and a piano accompaniment. The piano part begins with a piano (*p*) dynamic and consists of sustained chords and simple melodic lines. The vocal line is simple and expressive, with lyrics that tell a story of a flower that has faded. The score is presented in two systems, each with a vocal staff and a piano staff.

THE CHOICE

Solo, in Eb, (eb to g) 60 cents net

Allegretto rubato

Rose was her name, and she brought me a love - ly bou - quet of flow'rs. She
gave them to me With a smile, did she, That brightened the twi - light hours. She

The musical score for 'The Choice' is written in E-flat major, 6/8 time, and marked 'Allegretto rubato'. It features a vocal line and a piano accompaniment. The piano part begins with a forte (*f*) dynamic and consists of chords and simple melodic lines. The vocal line is simple and expressive, with lyrics that tell a story of a girl named Rose who brought a bouquet of flowers. The score is presented in two systems, each with a vocal staff and a piano staff. The second system includes the instruction 'poco rall.'.

Published and Copyrighted by M. Witmark & Sons, 10 Witmark Building, New York
CHICAGO — SAN FRANCISCO — LONDON — PARIS

Complete Copies can be had wherever Music is sold or from the Publishers
Price 60 cents net each

The Magic Of Your Eyes

In the twilight as the sun sinks low,
Comes the hour I dream of you;
Tiny stars in Heaven faintly glow,
You are gazing at them, too, I know,—
Bright and sparkling eyes of Night that ever
Waken memories anew!

Oh, the magic of your eyes!
Like twin stars of hope they rise,
Calm, serene and tender,
Gladly I surrender
To the love that in them lies.
Eyes that speak to me alone
Of a secret all their own;
All my soul is yearning
For the lovelight burning
In the magic of your eyes!

In the shadows of the silent night,
When in sleep my soul seeks you;
Then, in dreams, your eyes, with radiance bright,
Shining softly like a beacon light,
Guide me till at last I find a haven
In your heart so fond and true.

Arthur A. Penn

The Magic Of Your Eyes

Lyric and Music
By ARTHUR A. PENN

Slowly and Tenderly

mf *f* *dim. e rall.*

The piano introduction consists of two staves. The right hand features a series of chords and melodic lines, while the left hand provides a harmonic accompaniment. Dynamics range from mezzo-forte (mf) to forte (f), ending with a decrescendo and rallentando (dim. e rall.).

In the twi-light as the sun sinks low, Comes the hour I dream of
In the sha-dows of the si - lent night, When in sleep my soul seeks

mp

The piano accompaniment for the first vocal line is written in two staves. It features a steady accompaniment with some melodic movement in the right hand. The dynamic is marked mezzo-piano (mp).

you; Ti - ny stars in Heav - en faint - ly glow,
you; Then, in dreams, your eyes, with ra - diance bright,

cresc.

The piano accompaniment for the second vocal line continues in two staves. It includes a crescendo (cresc.) marking. The right hand has more active melodic lines, while the left hand remains supportive.

CARLE HINGE

WITMARK & SONS

You are gaz-ing at them, too, I know, Bright and spark-ling eyes of
 Shin - ing soft-ly like a bea - con light, Guide me till at last I

piu accel. *cresc.*

Night that ev - er Wak - en mem - o - ries a - new!
 find a ha - ven In your heart so fond and true.

ten.
f colla voce *rit.*

With much feeling
 Oh, the ma-gic of your eyes! Like twin stars of hope they

a tempo
mf arpeggiando

rise, Calm, se - rene and ten - der, Glad - ly I sur - ren - der

To the love that in them lies. Eyes that speak to me a -

poco rit. *mf a tempo*

lone, Of a se-cret all their own;

cresc.

appassionato All my soul is yearn-ing For the love-light burn-ing In the ma-gic of your

rit. e dim. 1. ten. *f* *dim.* *rallentando*

eyes! *D.C.* In the ma-gic of your eyes! *D.C.*

pp *rallentando* *pp* *6* *Red.* *

TWO SWEETLY MELODIOUS SOUTHERN SONGS

SELECTED FROM

THE WITMARK BLACK AND WHITE SERIES

Can't Yo' Heah Me Callin', Caroline

Lyric by WM. H. GARDNER

Music by CARO ROMA

SOLO, FOUR KEYS—C, (a to c) Eb, (c to eb) F, (d to f) G, (e to g) 60c. each

DUET, TWO KEYS in Fb, Baritone or Contralto (lead) and Soprano or Tenor 75c. each
in G, Soprano or Tenor (lead) and Contralto or Baritone

OCTAVO—MALE, FEMALE AND MIXED VOICES 15c. each, NET

Appealingly

Can't yo' heah me call-in' Car-o-line, It's mah heart a-call-in' dine. Lord-y, how I
miss yo', gal o' mine, Wish dat I could kiss yo' Car-o-line! Aint no use now

mf

Honey, If Yo' Only Knew

Lyric by WM. H. GARDNER

Music by ERNEST R. BALL

SOLO, FOUR KEYS—Db, (bb to db); Eb, (c to eb); F, (d to f); G, (e to g); 60c. each

DUET, TWO KEYS— in F, Alto or Baritone (lead) and Soprano or Tenor; 75c. each
in G, Soprano or Tenor (lead) and Alto or Baritone

OCTAVO—MALE, FEMALE AND MIXED VOICES 15c. each, NET

Tenderly, with much expression *ten.*

Hon-ey, if yo' on-ly knew All de dreams I dreamed ob yo', All de days I lived once more
All de gold-en hours ob yore! All de smiles an' all de tears, Liv-in' o-ver bless-ed years, I'm

p-f *ten.* *rit.* *a tempo* *ten.*

THE ABOVE CAN BE HAD WHEREVER MUSIC IS SOLD OR OF THE PUBLISHERS

M. WITMARK & SONS—WITMARK BUILDING—NEW YORK

PRICE, SOLO 60c.

DUET 75c.

QUARTETS 15c. each

If you are interested in Beautiful Songs (Sacred or Secular) send for our Catalog containing complete Poems and Thematic quotations from some of the most beautiful numbers in the well-known

WITMARK BLACK AND WHITE SERIES

SEND STAMP FOR POSTAGE



ANOTHER VOCAL GEM FROM THE WELL KNOWN
WITMARK BLACK AND WHITE SERIES
 BY THE WORLD FAMOUS COMPOSER
ERNEST R. BALL

MY ROSARY FOR YOU

Lyric by AMY ASHMORE CLARKE

Published as follows— SOLO, FIVE KEYS— C, (C to D)— Db,— Eb,— F,— G. DUET, TWO KEYS— Db,— F.
 QUARTETS,— FOR MALE, FEMALE, and MIXED VOICES. TRIO,— FOR FEMALE VOICES.

In Barcarolle Tempo with much expression

A ros - a - ry I wrought for you, Each pearl a mem - o - ry Of
 hap - pi - ness my heart once knew, Of love you had for me. Each ros - a - ry must
 have its cross To bear un - to the end, And mine is just my bro - ken heart, Which
 on - ly you can mend. My ros - a - ry will

p *rit.* *a tempo* *a little animated* *poco rit.* *mf*

THE ABOVE CAN BE HAD WHEREVER MUSIC IS SOLD OR OF THE PUBLISHERS
M. WITMARK & SONS 441 WITMARK BUILDING NEW YORK
 Price, Solos 60 c. — Duets 75 c. — Quartets 15 c. Each, Net, Postpaid.

If you are interested in Beautiful Songs (Sacred or Secular) send for our Catalog containing
 complete Poems and Thematic quotations from some of the most beautiful numbers in the well-known

WITMARK BLACK AND WHITE SERIES

ENCLOSE STAMP FOR POSTAGE



Discarded Gift UTA Library