

Table 6-6 Input and Output Matrix Pertaining to Individual Zones in Post-lake Model. Figure along the Diagonal (**red print**) Represent Total Input and Output of Individual Zone.

The Mark '-' Denotes that the Corresponding Zones do not have Interactions. This Means, they do not have Flow Between the Corresponding Zones. Flow Units CFD

		Output from Corresponding Zones in Rows																	
Zones		1	2	3	4	5	6	7	8	9	10	11	12	13	14	15	16	0	
I n p u t Z o n e s f o r C o l u m n s	1	32,349	128	-	-	-	-	-	-	-	-	-	0	-	-	0	-	1,652	
	2	68	25,825	111	-	-	-	-	-	-	-	-	171	-	0	-	-	1,619	
	3	-	320	36,439	239	-	-	-	-	-	-	-	0	-	0	-	-	1,949	
	4	-	-	0	22,977	92	-	-	-	-	-	-	0	-	0	-	-	2,089	
	5	-	-	-	114	11,681	165	-	-	-	-	-	0	-	0	-	-	2,545	
	6	-	-	-	-	0	30,534	274	962	-	-	-	1,482	-	0	-	-	6,911	
	7	-	-	-	-	-	46	24,180	-	-	-	-	6,609	-	-	-	-	9,033	4,519
	8	-	-	-	-	-	220	-	18,813	111	-	-	379	-	0	-	-	1,819	
	9	-	-	-	-	-	-	-	174	17,198	0	-	0	-	0	-	-	1,552	
	10	-	-	-	-	-	-	-	-	332	27,544	-	855	-	0	-	-	1,436	
	11	-	-	-	-	-	-	-	-	-	-	-	1,770,000	3,844	-	-	106,000	-	280,000
	12	20,206	20,675	23,618	11,377	5,818	19,234	6,660	9,492	8,145	12,897	50,179	1,250,000	24,723	6,564	10,704	712	96,197	
	13	-	-	-	-	-	-	-	-	-	-	-	236,000	810,000	-	140,000	-	61,717	
	14	-	4,702	12,710	11,247	5,709	7,165	-	8,185	8,611	14,648	-	4,705	-	121,000	-	-	9,753	
	15	12,075	-	-	-	-	-	-	-	-	-	-	488,000	26,750	8,682	-	2,120,000	-	279,000
	16	-	-	-	-	-	-	-	1,343	-	-	-	-	554	-	-	-	14,702	658
	0	0	0	0	0	0	0	0	0	0	0	0	390	965	0	0	0	0	-

Table 6-7 Input and Output Matrix Pertaining to Individual Zones in Pre-lake Model. Figures along the Diagonal (red print) Represent the Total Input/Output of Individual Zone.

The Mark '-' Denotes that the Corresponding Zones do not have Interactions. This Means, they do not have Flow Between the Corresponding Zones. Flow Units CFD

		Output from the Corresponding Zones in Row																
Zones		1	2	3	4	5	6	7	8	9	10	11	12	13	14	15	16	0
I n p u t Z o n e s f o r C o l u m n s	1	99,676	5,475	-	-	-	-	-	-	-	-	-	1,448	-	-	96	-	2,222
	2	0	82,781	894	-	-	-	-	-	-	-	-	205	-	0	-	-	2,331
	3	-	1,083	65,735	3,388	-	-	-	-	-	-	-	1,270	-	983	-	-	2,681
	4	-	-	166	60,648	1,704	-	-	-	-	-	-	0	-	1,155	-	-	2,570
	5	-	-	-	806	52,247	3,446	-	-	-	-	-	84	-	0	-	-	2,552
	6	-	-	-	-	0	123,000	6,531	4,632	-	-	-	2,494	-	1,695	-	-	5,463
	7	-	-	-	-	-	720	114,000	-	-	-	-	98	-	-	-	1,713	3,552
	8	-	-	-	-	-	57	-	73,710	1,316	-	-	0	-	0	-	-	1,312
	9	-	-	-	-	-	-	-	4,748	44,900	32	-	1,346	-	0	-	-	1,228
	10	-	-	-	-	-	-	-	-	2,735	56,334	-	0	-	1,024	-	-	1,172
	11	-	-	-	-	-	-	-	-	-	-	2,230,000	6,021	-	-	132,000	-	319,000
	12	62,947	44,078	39,887	32,818	27,048	62,820	72,944	40,717	16,330	42,430	47,061	1,250,000	30,864	15,631	10,764	6,069	101,000
	13	-	-	-	-	-	-	-	-	-	-	-	287,000	661,000	-	163,000	-	61,730
	14	0	9,542	12,530	13,078	7,330	11,160	-	10,203	7,817	7,555	-	0	-	87,331	-	-	8,116
	15	26,812	-	-	-	-	-	-	-	-	-	560,000	41,676	10,281	-	1,930,000	-	359,000
	16	-	-	-	-	-	-	7,321	-	-	-	-	0	-	-	-	9,785	532
	0	0	0	0	0	0	0	0	0	0	0	0	0	1,518	0	0	0	0

Legend

Land_use_1990

- 112
- 123
- 143

LU90CODE

- 111
- 113
- 121
- 122
- 131
- 141
- 142
- 171
- 173
- 300
- 500

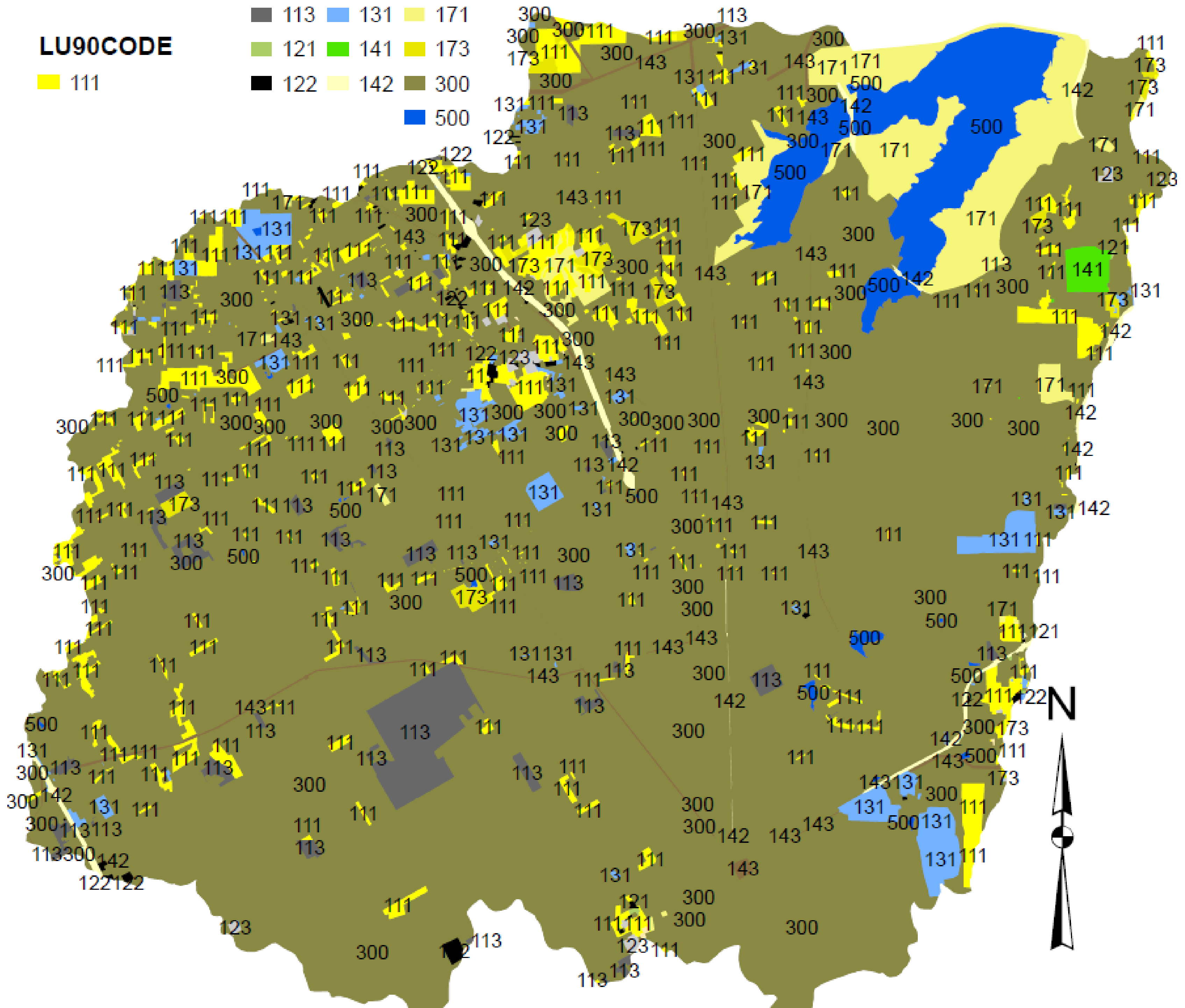


Figure 3-5 The land-use pattern of the JPL catchment from pre-lake through 1990

Legend

Land_use_1995 122 171

LU95CODE 123 173

111 131 181

112 141 300

113 142 500

121 143

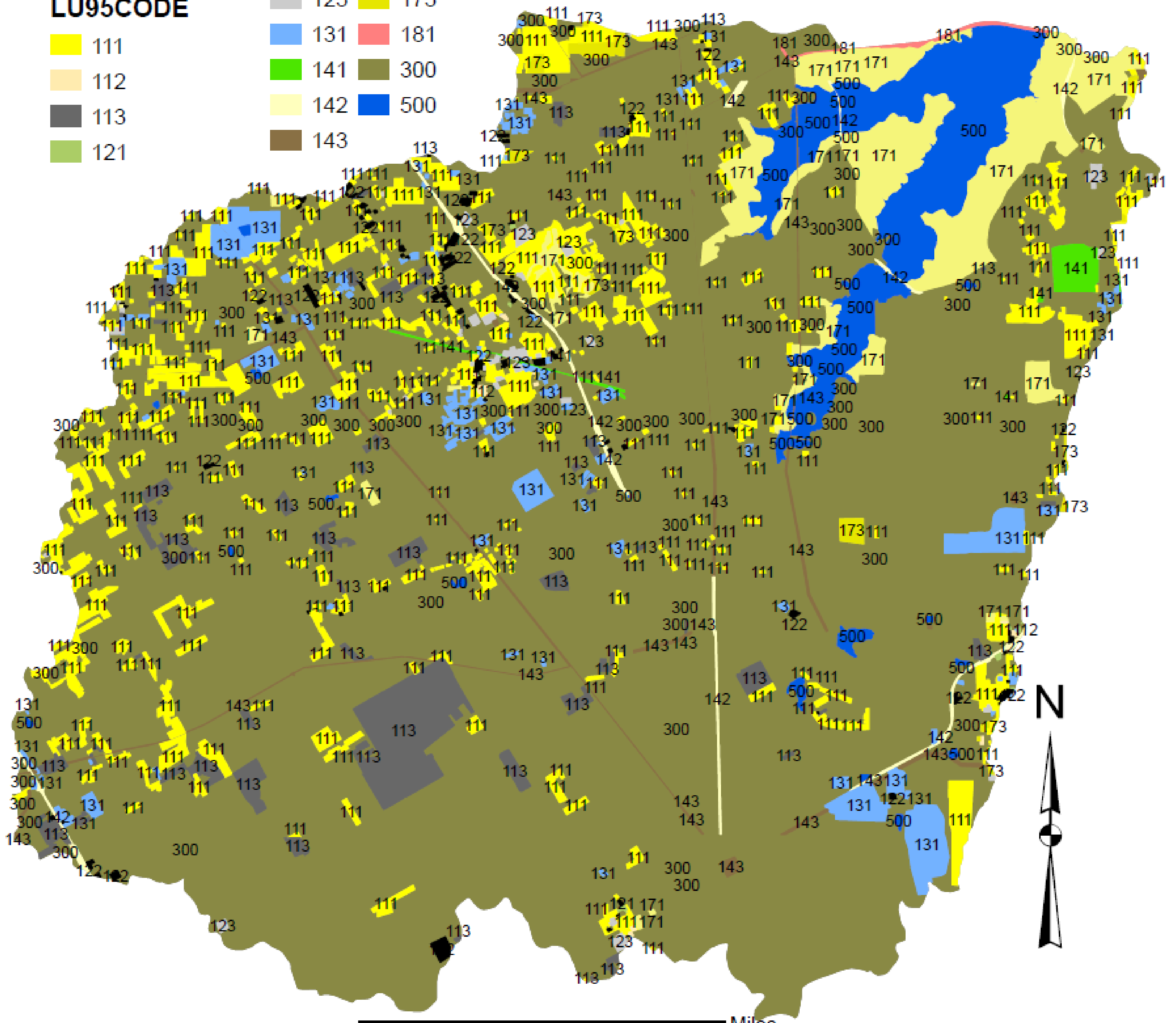


Figure 3-6 The land-use pattern of the JPL catchment in beginning years of impoundment (1995)

Legend

Land_use_2000	■ 113	■ 141	■ 181
LU20CODE	■ 121	■ 142	■ 300
	■ 111	■ 143	■ 500
	■ 112	■ 171	
	■ 131	■ 173	

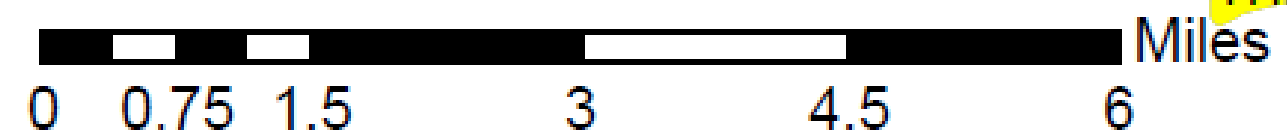
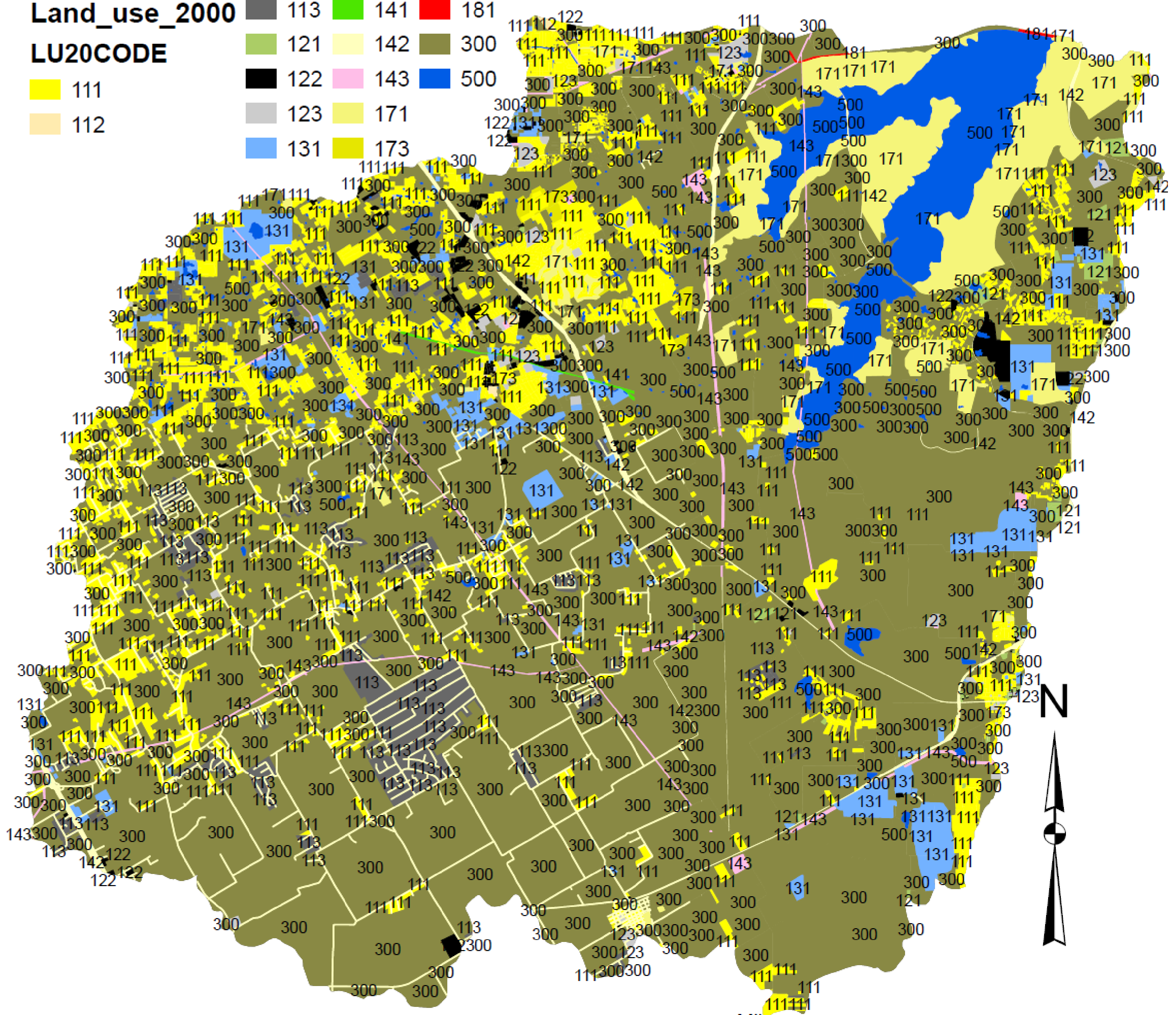












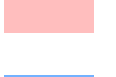
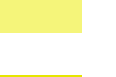
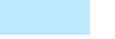
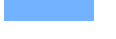

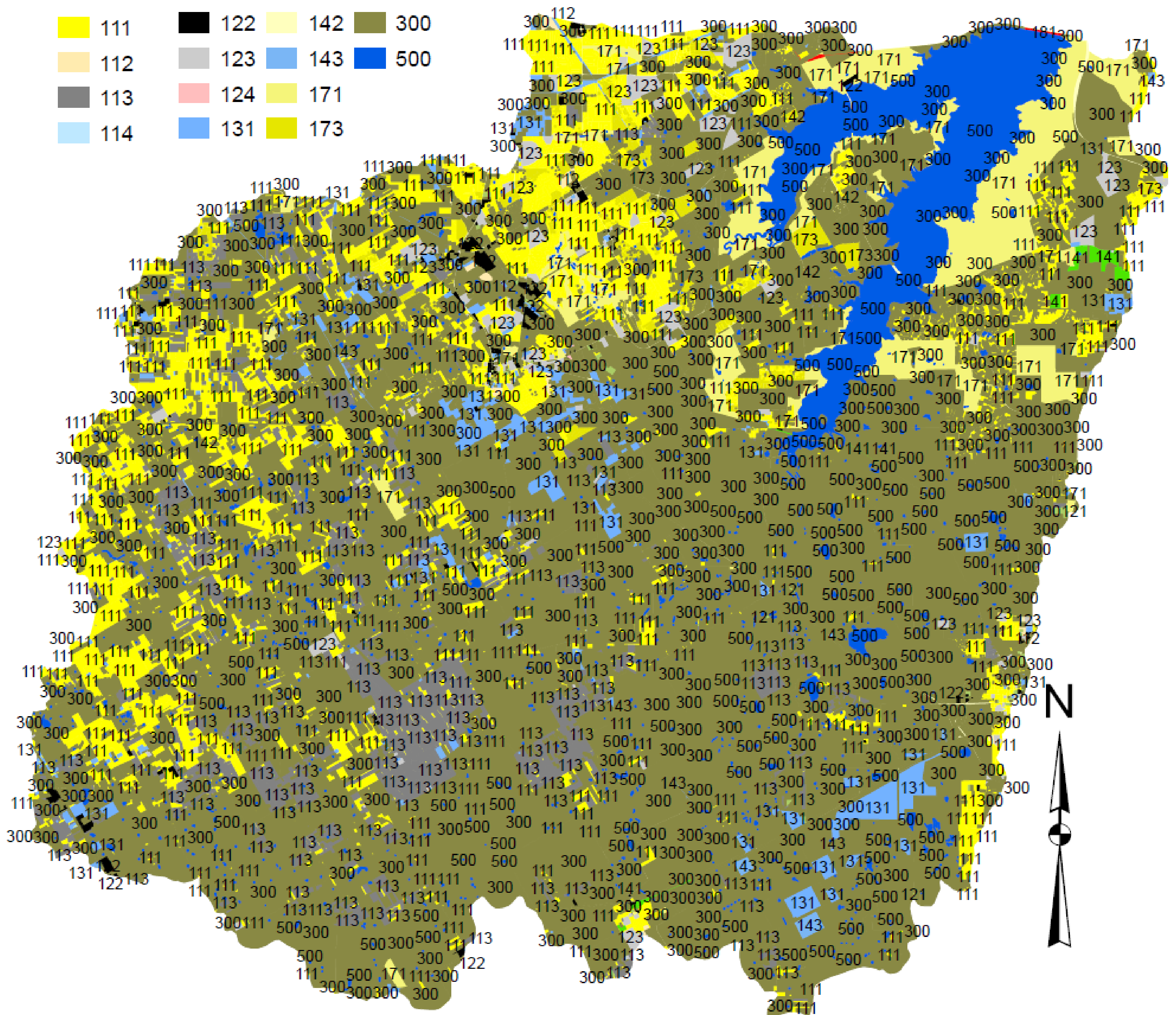


Figure 3-7 The land-use pattern of the JPL catchment during the mid-years of impoundment (2000)

Legend

LUCODE							
	121		141		181		
	111		122		142		300
	112		123		143		500
	113		124		171		
	114		131		173		

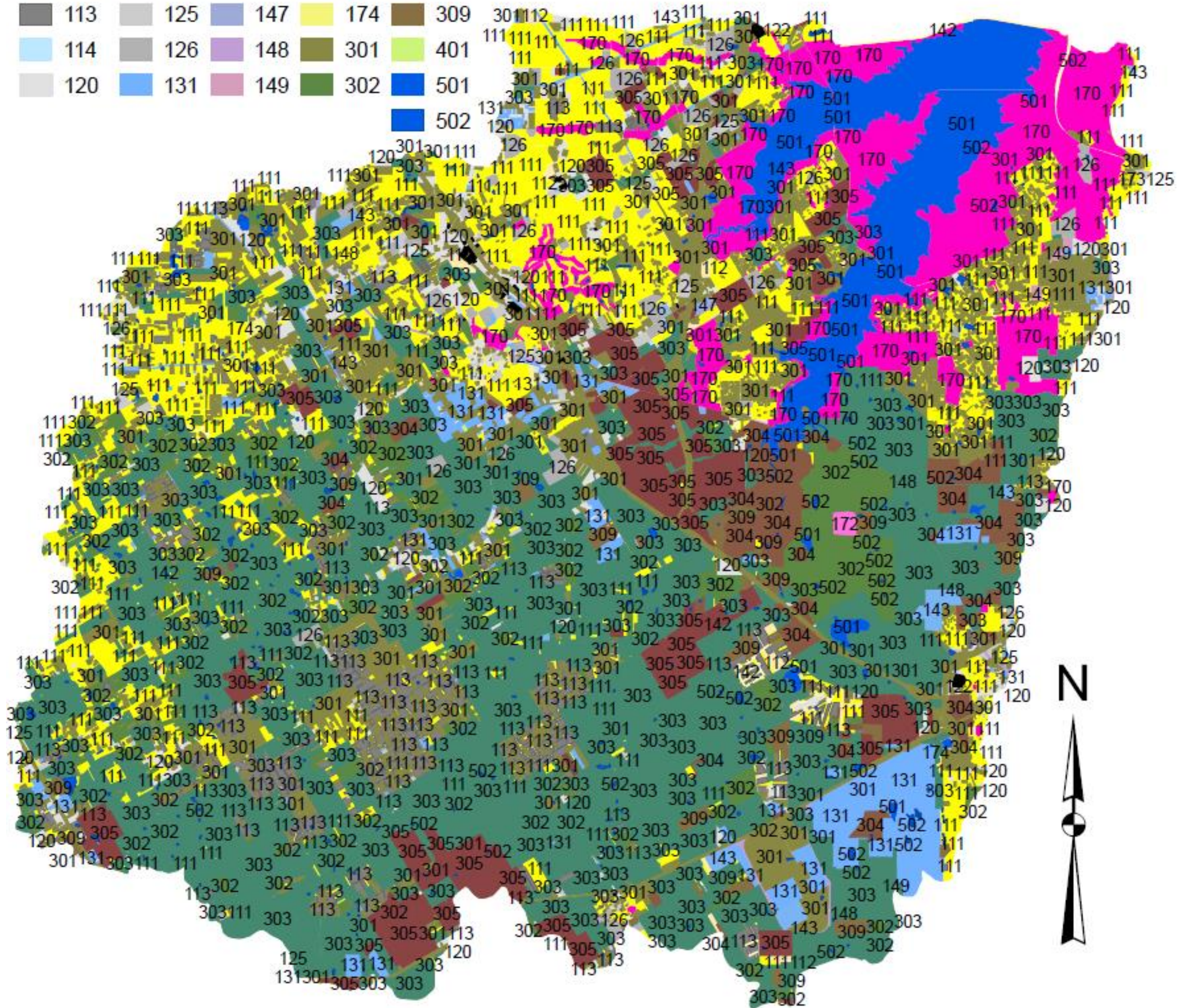


0 0.75 1.5 3 4.5 6 Miles

Figure 3-8 The land-use pattern of the JPL catchment after impoundment through 2005

Legend

COG_LU	121	142	170	303
	111	122	143	172
	112	124	146	173
	113	125	147	174
	114	126	148	301
	120	131	149	302
				501
				502
				304
				305
				309
				401



0 0.75 1.5 3 4.5 6 Miles

Figure 3-9 The land-use pattern of the JPL catchment after impoundment through 2010